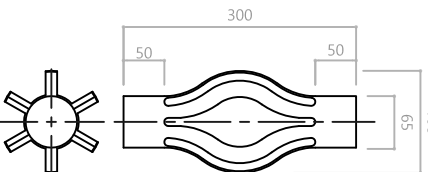
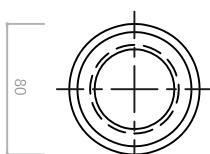
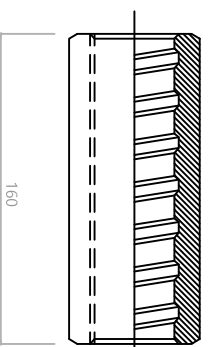
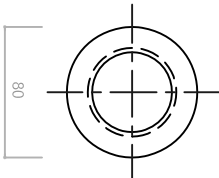
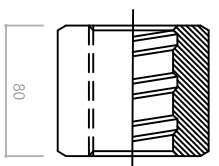
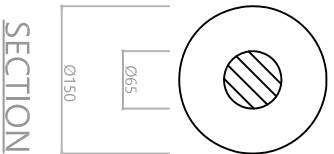
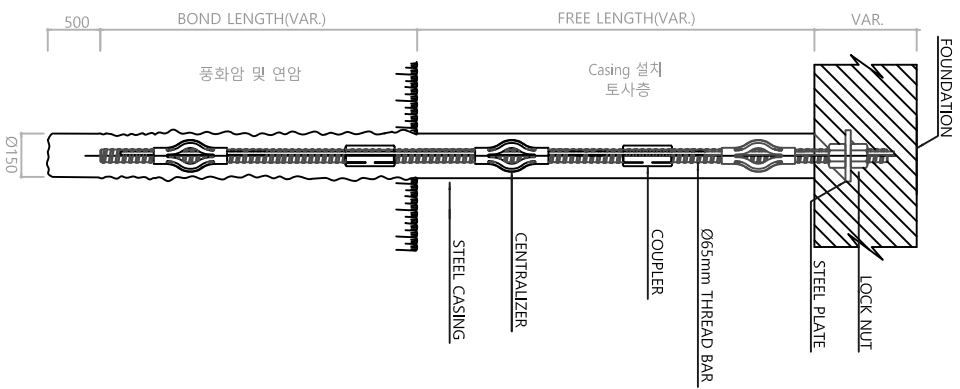
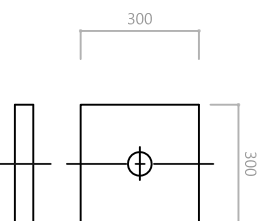


마이크로파일 상세도

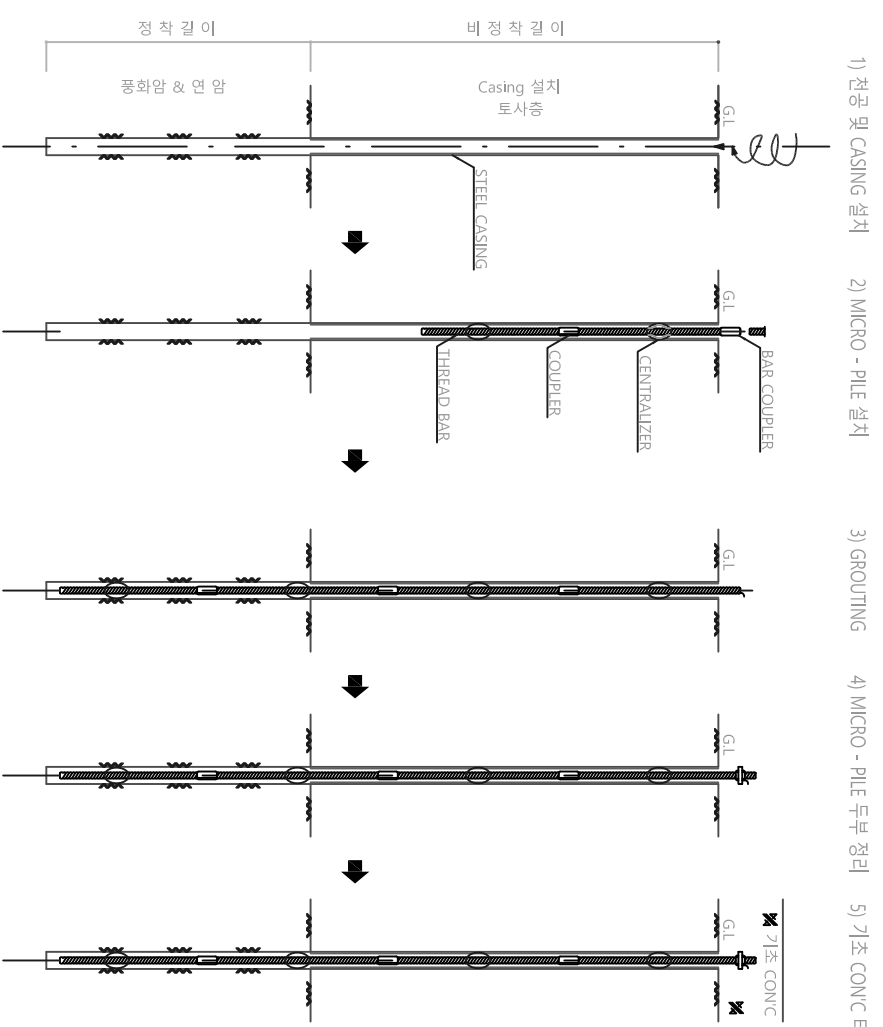
S = 1 : NONE



CENTRALIZER



STEEL PLATE



마이크로 파일 재원표

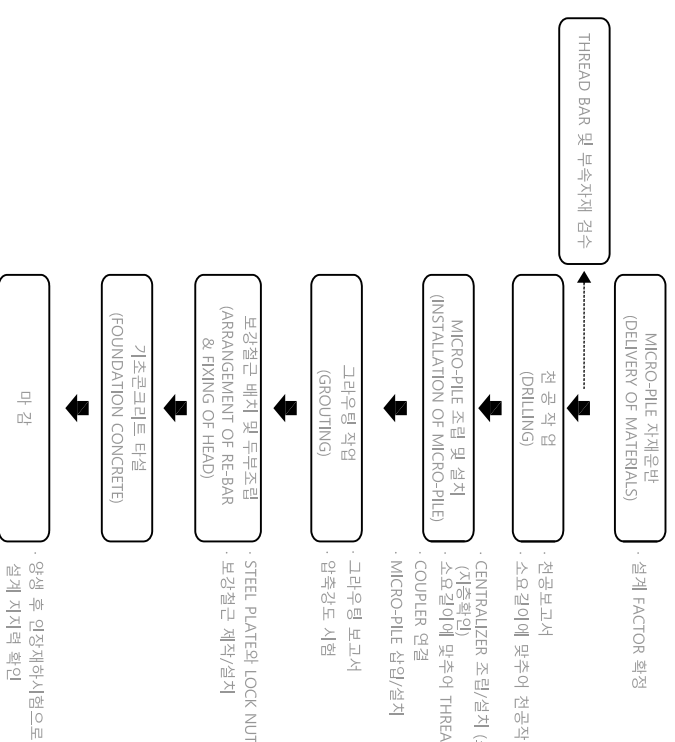
DESCRIPTION	STEEL GRADE	LOAD (ton)	DRILL Dia (mm)	THREAD BAR Dia (mm)	LENGTH(m)				REMARK	
					정착깊이(LB)	바정착깊이(LF)	기초근원깊이(LO)	전공양(LD)		총 길이(LT)
마이크로파일	S5000/S5500	70	150	65	5.0m	3.0m	0.5m	8.0m	8.5m	

*** NOTE**

- 전공양(LD) = LB + LF (전공 토사 처리장)
- 총길이(LT) = LB + LF + LO

*** NOTE**

- 1) 전공역암시 공백현상이 불가한 경우에는 STEEL CASING을 사용하여 공백 현상 후 시공하여야 한다.
- 2) THREAD BAR 재질을 S5000/S5500 kg/m² 이거나, 동등 이상의 재품이어야 한다.
- 3) LOCK NUT 와 COUPLER 는 THREAD BAR와 동등 또는 그 이상의 규격의 강재로 제작되어야 한다.



시공순서도